

## West Wittering

Detached House on a private estate within 15 minutes of the sea.  
Available for a short term let



Location: West Wittering  
County: W. Sussex  
Property ID: 1536  
Bedrooms: 4  
Bathrooms: 4  
Fully Furnished

Price pcm: £895 excl  
Term: 6 months  
Furnished Assured Shorthold Tenancy

### Summary of Accommodation:

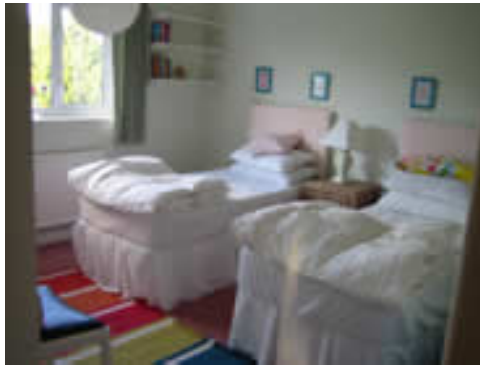
Large Lounge  
Dining Room  
Kitchen  
Utility Room  
WC  
Master bedroom (with en-suite bathroom/shower)  
Two twin Bedrooms  
Bedroom 4 with bunk beds  
Family Bathroom  
Recently fitted outside wet room with shower  
Double Garage and drive with parking for 2 cars  
Balcony  
Accommodate 8

The Country House Company • The Granary • Whitedale Farm • East Street • Hambledon • Hampshire • PO7 4RZ

T. 02392 632 275 • F. 02392 632 098

sales@country-house-company.co.uk • lettings@country-house-company.co.uk • country-house-company.co.uk





### Description

A lovely detached house on a private estate decorated and furnished to a very high standard, offering comfortable accommodation with a very private and secluded rear garden.

The property at this popular seaside village is within a 15 minute walk to the beautiful, sandy beach and close to the local shops. The neighbouring village of East Wittering is approximately 1 mile with a Post Office, fishmonger, two supermarkets and a Bank for convenience and the Cathedral city of Chichester approximately 7 miles away

White Goods: Washing machine, tumble drier, larder freezer, larder fridge and microwave.

Fully furnished including Duvets, TV, DVD and Hi Fi

Curtains/Blinds: Curtains and blinds

Carpets: Wood flooring and carpets to bedrooms

Availability: Mid-September for 8-9 months

Council Tax Band: Chichester District Council – Band F £2132.10 payable 2011/12

Broadband Availability: Available

Mobile Phone Reception: Most networks available

Pets: Yes

Smoking: No

**EPC available on request**

**See our Website for Disclaimer Details**

### Viewing:

Strictly by appointment with The Country House Company, as many properties are already tenanted and we wish to respect their privacy.

Tel: 02392 632275 Email: [info@country-house-company.co.uk](mailto:info@country-house-company.co.uk)



The Country House Company • The Granary • Whitedale Farm • East Street • Hambledon • Hampshire • PO7 4RZ

T. 02392 632 275 • F. 02392 632 098

[sales@country-house-company.co.uk](mailto:sales@country-house-company.co.uk) • [lettings@country-house-company.co.uk](mailto:lettings@country-house-company.co.uk) • [country-house-company.co.uk](http://country-house-company.co.uk)



The Country House Company is the trading name of Rushmere Country Estates LLP Registered in England No: 0C351808 VAT No: 754 904 708 Rushmere Farm, Hambledon, Hampshire PO7 4SG  
The Country House Company regulated by RICS. S.P. Crossley MRICS FARLA, R.N. Crossley